

MY GRANIL



Year:	2014/2024
Beam:	7.43 m
L.O.A.:	26.1 m
GT:	203
Crew:	4
Guests/Cabins:	8/4
Engines:	MAN 2876 LE 403 6 cylinders heavy duty 2 x 331KW
Cruise Speed/Top Speed:	10 kn / 11.5 kn
Builder/Designer:	Cantiere delle Marche - Jonathan Quinn Barnett.
Home Port:	Jesolo, Italy
Asking Price:	7.500.000 € VAT Paid

GRANIL is a 26.1 m Motor Yacht, built in Italy by Cantiere delle Marche and delivered in 2014. She is one of 6 Darwin 86 models. This luxury vessel's exterior design is the work of Jonathan Quinn Barnett.

GUEST ACCOMMODATION

GraNil has been designed to comfortably accommodate up to 8 guests in 4 suites. She is also capable of carrying up to 4 crew onboard to ensure a relaxed luxury yacht experience.

RANGE & PERFORMANCE

GraNil is built with a steel hull and aluminium superstructure, with teak decks, she has a beam of 7.43m (24'42"), a draft at full load of 2.3m (7'55"). Powered MAN 2876 LE 403 6 cylinders heavy duty 2 x 331KW, she comfortably cruises at 10 knots, reaches a maximum speed of 11/11.5 knots. Her water tanks store around 3,400 Litres of fresh water. She was built to DNV (Det Norske Veritas) classification society rules.

FULL SPECIFICATIONS

Builder Cantiere Delle Marche
Type Motor Yacht
Darwin Class 86/03
Hull Steel
Superstructure Aluminium
Year Built 2014
Delivered 2014
Overall Length 26,02
Beam 7,36
Draft 2,50
Displacement
Gross Tonnage 201T
Flag Italy
Location Jesolo
Naval Architect Hydro Tec. (Ing. Sergio Cutolo)

MAIN ENGINES

Engine Hours 2500h
Engine type MAN D2876 LE 403
Power 331KW x 2
Gear Boxes ZF
Propulsion Shaft
Propeller 4 blades Radice

PERFORMANCES

Max speed 12,5 Kt
Cruise speed 10 Kt
Economy speed 7 Kt

MAIN GENERATORS

Generators Hours 4000h
Generator type Kohler 50EFOZD
Rated output 50Kw

CAPACITIES

Diesel Oil 42000 L
Fresh Water 3900. L
Black Water 1000 L
Grey Water 2000 L
Clean Oil 800 L
Dirty Oil 800 L
Bilge 1200 L

ACCOMODATION

Number of Guests 10
Cabins 4
Crew 4
Crew Cabins 2

NAVIGATION EQUIPMENT

Radar Furuno NND2 - NNDR.
Compass Furuno C70

ENTERTAINMENT SYSTEM

Sound System Bose

KITCHEN APPLIANCES

Main Galley Induction Smart 120 Plates Siemens, Oven Miehle 120, Miele Microwaves, Miele Fridge + Freezer x2, Miele Dish Washer, Miele Washing machine, Miele Dryer

AUXILIARY MACHINERY & ELECTRICAL SYSTEM

Electricity 380 V 50Hz system with 2 bus bar and parallel system distribution control
Shore Power Transformer Y 100 Amp
Cord Retractor Y
Batteries Services 2V 800A x 12 module
Battery Charges Mastervolt 100A services/40A engines/20A/generators/40A emergency

SAFETY & SECURITY EQUIPMENT

2x10 pax ocean life raft

ANCILLARY EQUIPMEN

Stabilizer brushless Zero speed CMC
Steering System hydraulic systems.
Bow Thruster Electric CMC
Stern Thruster Electric CMC
Fuel Treatment GE
Fuel Filters Palmer
Fuel Transfer Manual, electric or via Purifier
Fresh Water Pump Double Gianneschi
GS Pump Gianneschi
Fire Pump Gianneschi
Fire Emergency Pump Gianneschi
Sewage Treatment Gianneschi
Black And Grey Water Pumps Gianneschi
Air conditioning Condaria
Watermaker Idromar
Water Purification System Idromar
Waste Disposal
Boiler 2 x 100 L
Washing Machine 1 Miele. 1 LG
Dryer Machine MIELE

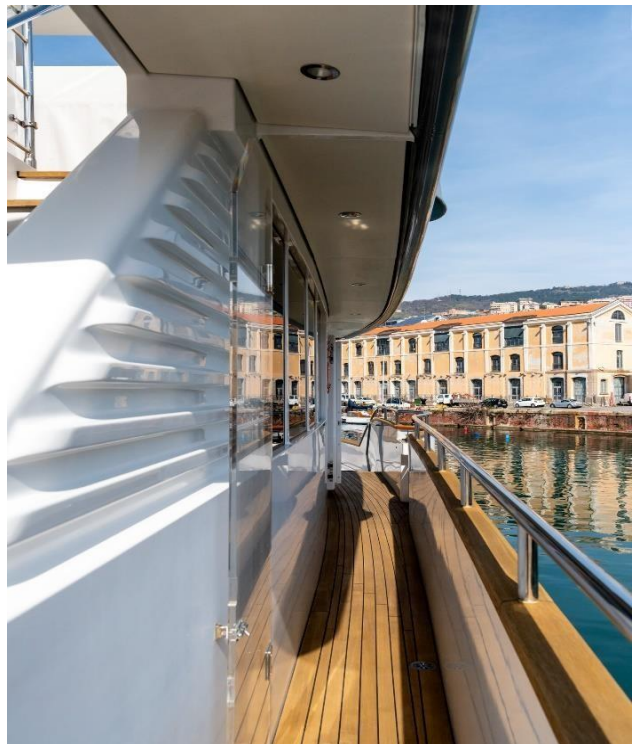
DECK EQUIPMENT

Anchor 2 x 175Kg Posidonia HHP
Chain 2x 16mm x 175m
Windlass 2x 4500w
Winches 2 x 3000w
Gangway Opacmare
Swimming Ladder Platform transformer Opacmare
Washing shafts System Electric
Filling System Gun system E.R.
Water Purification System Idromar

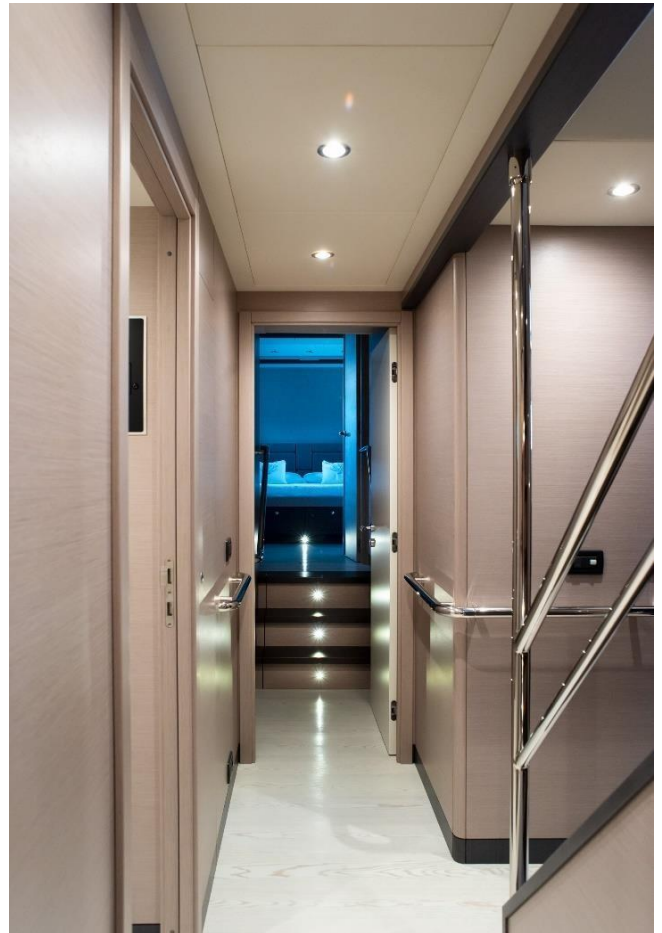
TENDER

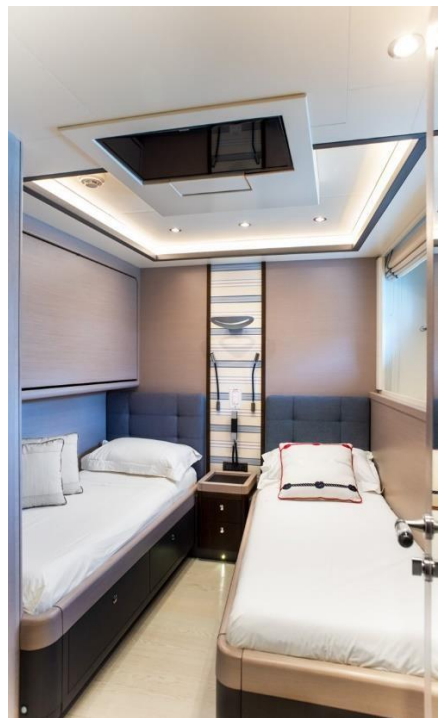
Williams Diesel Jet 505

***This document is not contractual. All specifications are given in good faith and offered for informational purposes only. The publisher and company do not warrant or assume any legal liability or responsibility for the accuracy, completeness, or usefulness of any information and/or images displayed. Yacht inventory, specifications and sale price are subject to change without prior notice. None of the text and/or images used in this brochure maybe reproduced without written consent from the publisher.







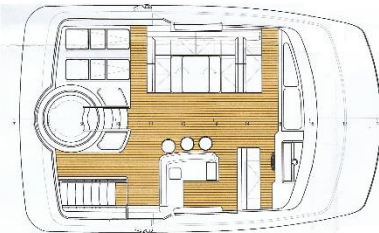
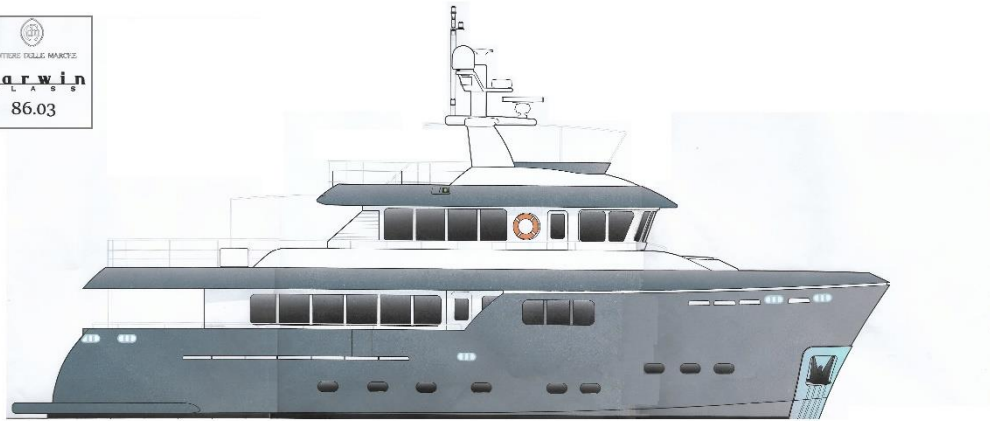









 CANTIERI DELLE MARCHE
Darwin
 CLASS
 86.03



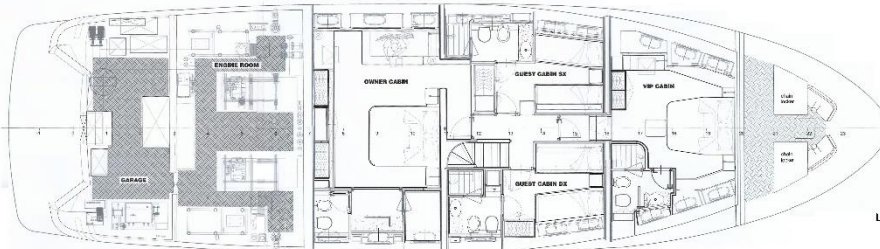
SUN DECK



UPPER DECK



MAIN DECK



LOWER DECK